



WELCOME TO

300 Front St

Unit 4A2

MOO LROZL

SERVICE VEHICLES VISITOR & RESIDENT PARKING

Google Maps Location Overview

Hello and welcome to:
300 Front St W, Toronto, ON M5V 0E9
Unit 4A2

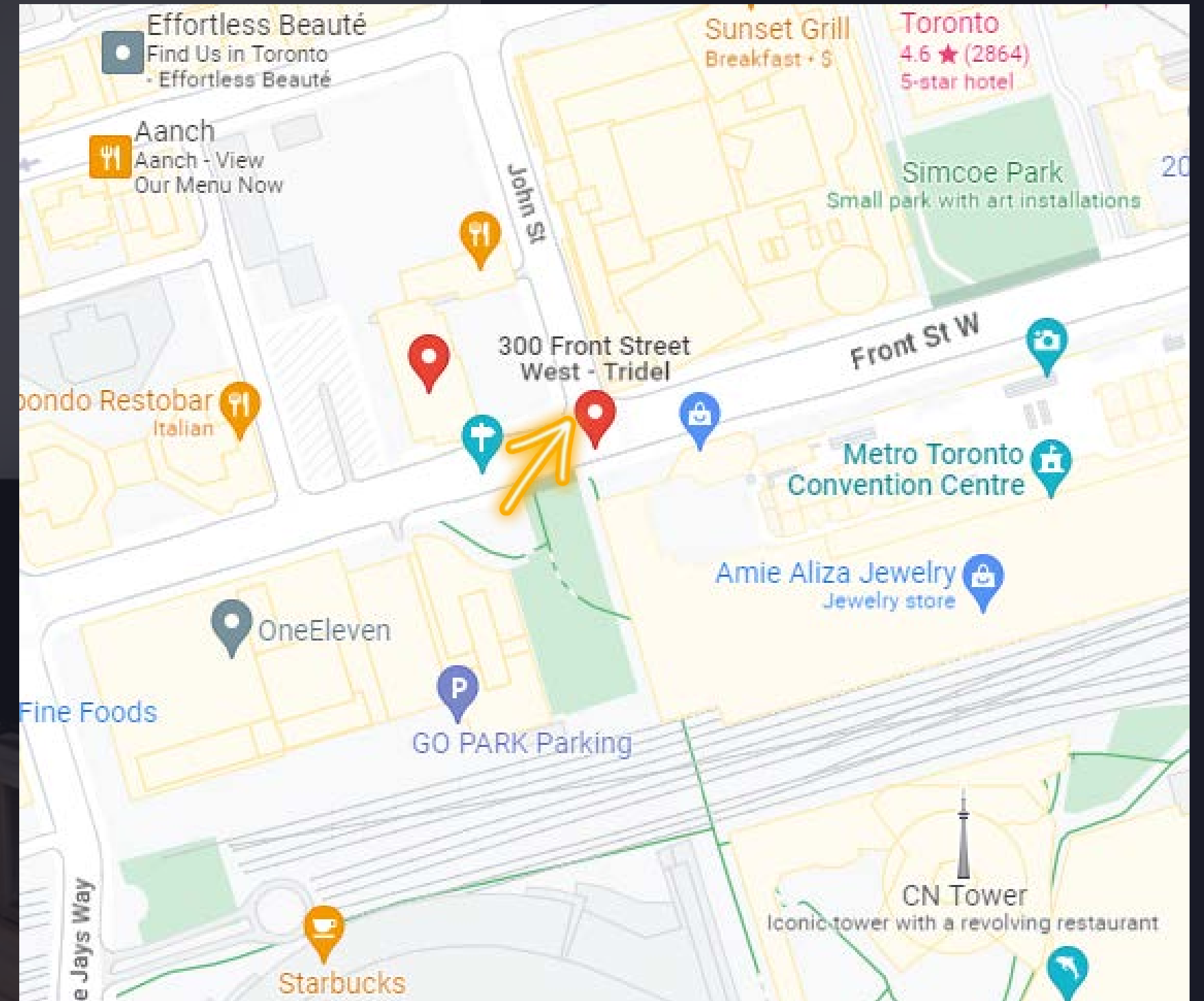
Your keys and parking FOB will be located
at the concierge desk.

Please have your ID ready for verification.

At the end of your stay, please return the
keys and pouch to the concierge desk.

Concierge #: 647-777-8888

Thank you!



Keys/FOBs

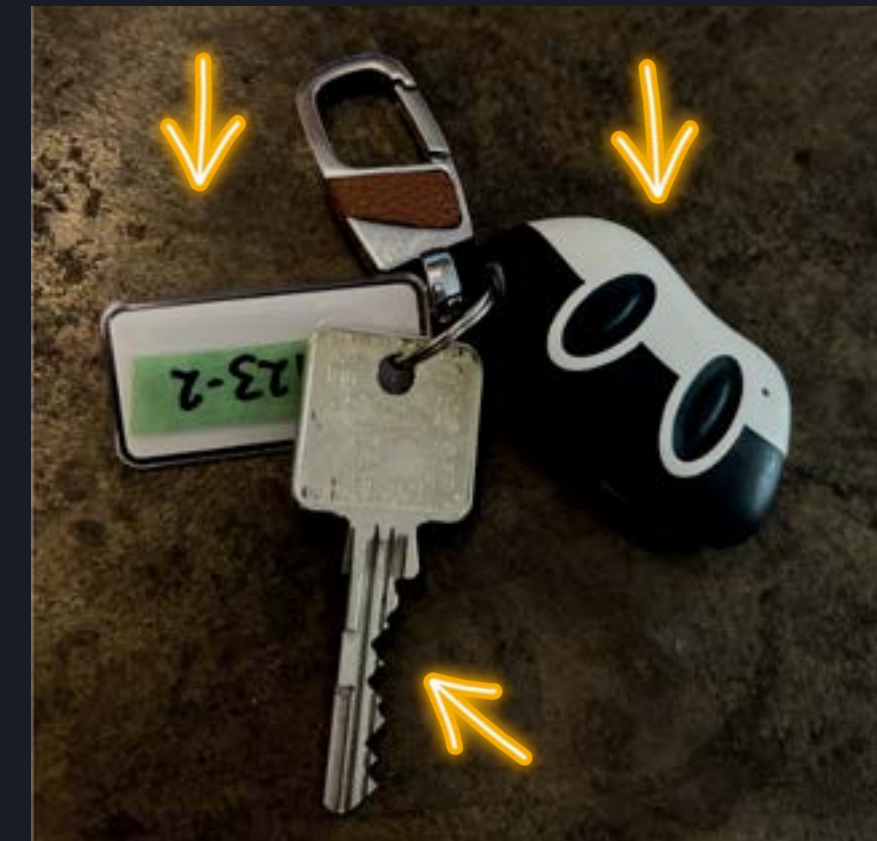
Once you have picked up your key and FOBS with the concierge, you will need to Tap the smaller black FOB onto the Black Sensors inside of the building to gain access to the Elevators and Entrance Doors.

Tap it and then select your Floor.

Use the **LOW RISE ELEVATORS ONLY!**

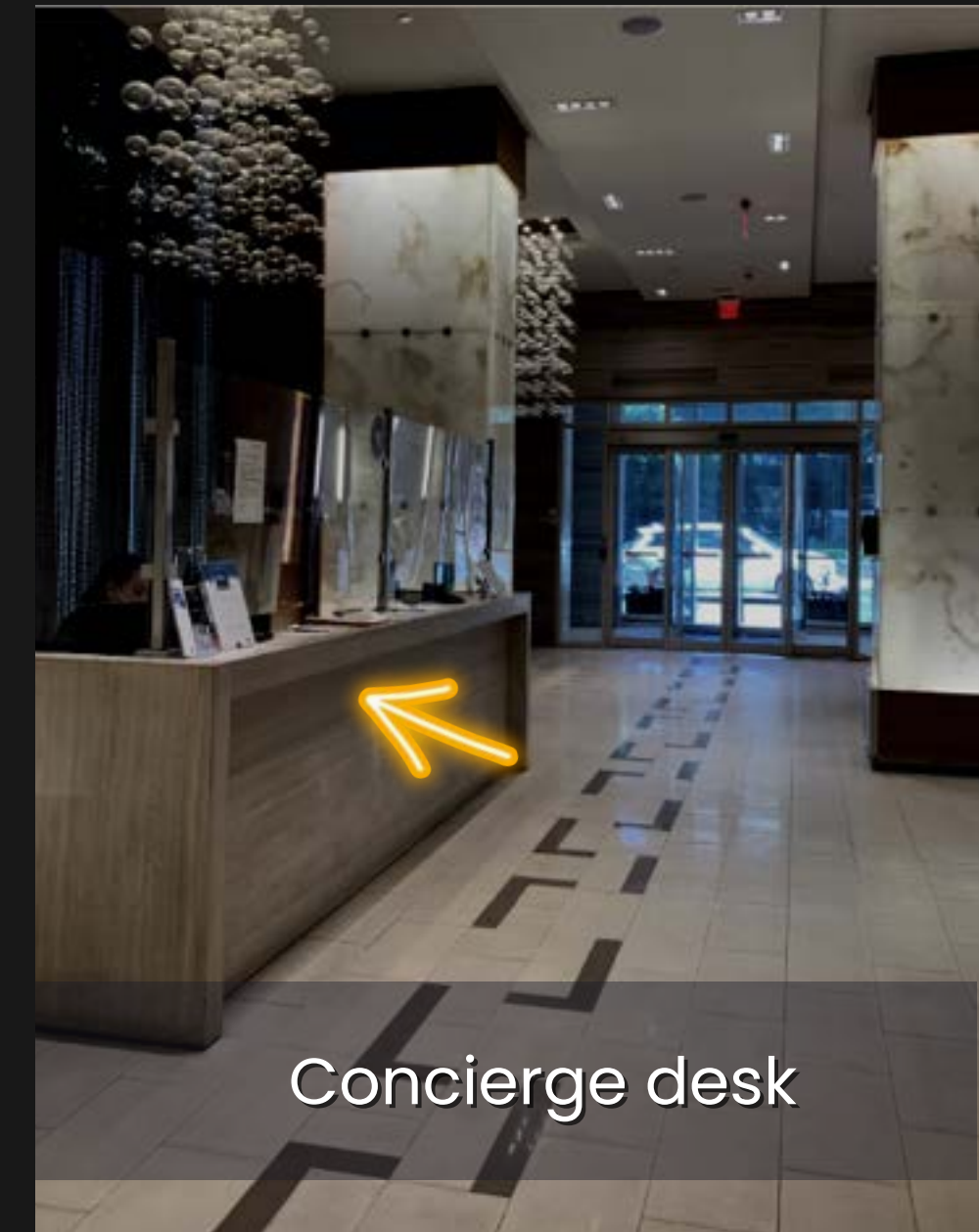
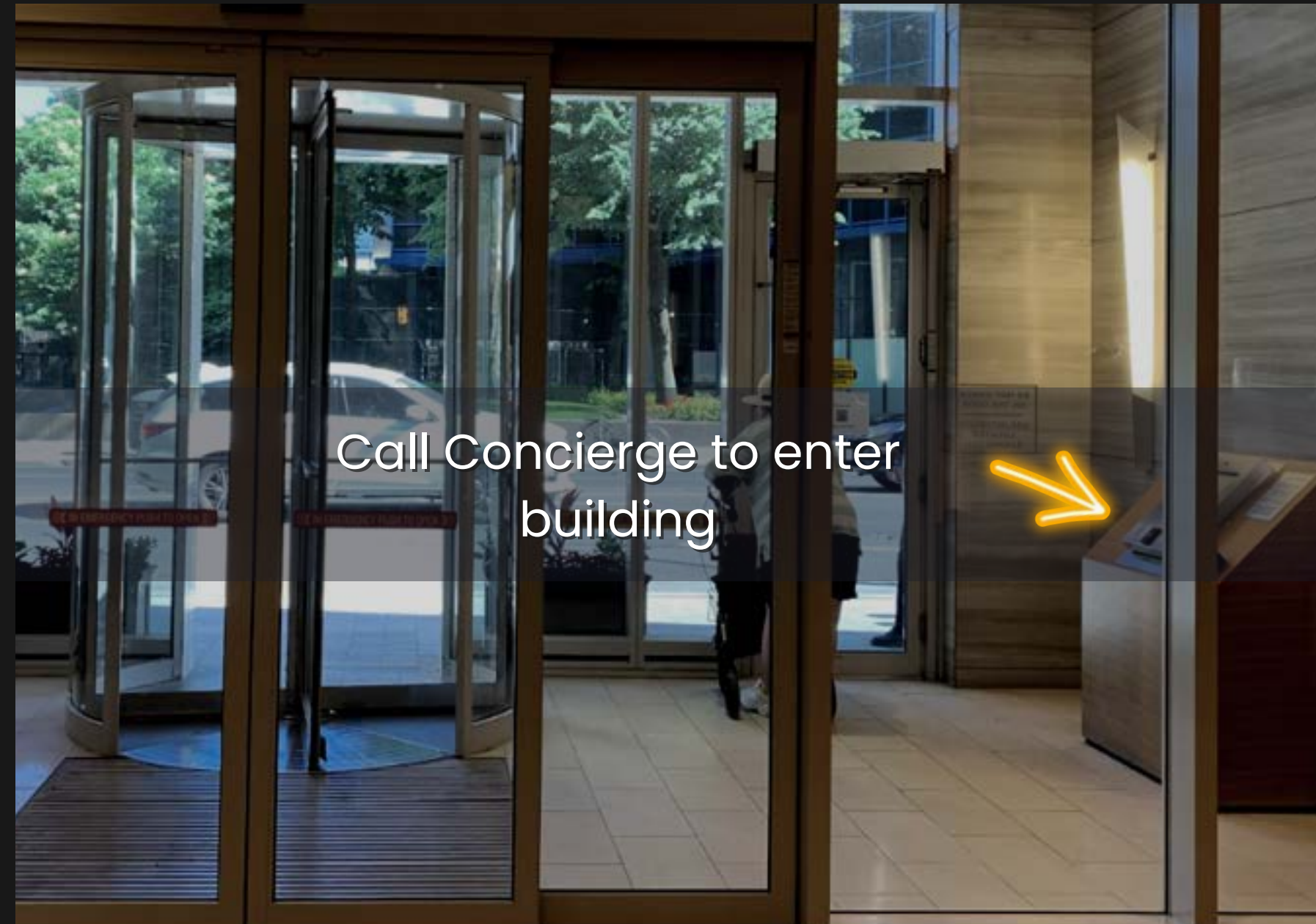
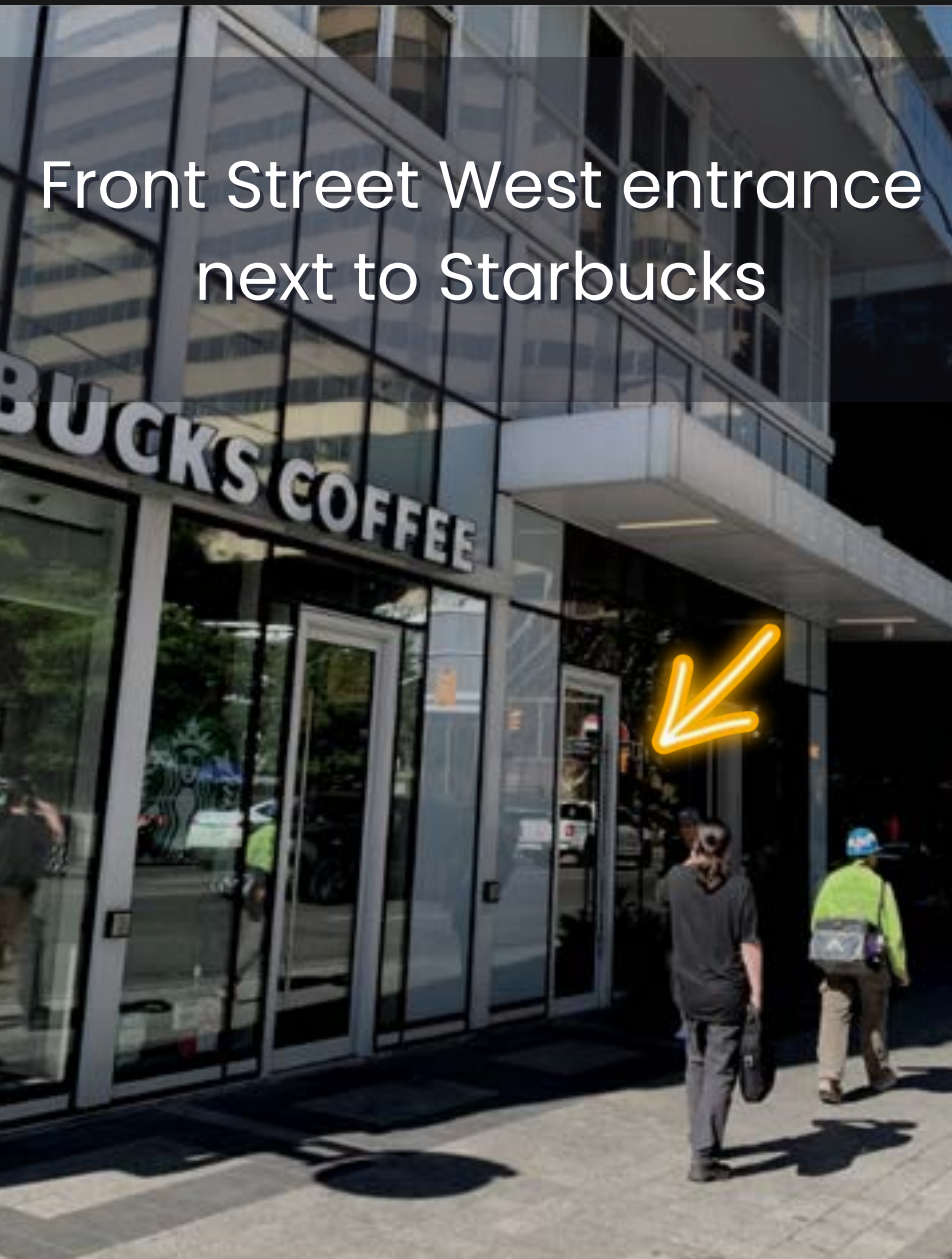


Elevator FOB Parking
Garage
Remote



Unit Key

Check-in Instructions



- Upon arrival, the unit's Keys will be with the concierge. At the front lobby doors, you can call the security by dialing 0101 and tell them that you are checking at unit 4A2.
- IF YOU'RE DRIVING: Check the Parking Slide
- Have your ID ready so that they can check you in and provide you with the keys to the unit & parking garage FOB.
- PLEASE BRING THE KEYS BACK TO THE CONCIERGE AT THE END OF YOUR STAY!
- If you have any issues or questions you can ask us at any time.

Check-out Instructions

Please return the keys to the concierge once you're ready to check out!

- Remove your garbage
- Turn off lights
- Don't leave any dishes in the sink
- Check all your belongings

If you could please take a picture of the key pouch at the concierge desk and send it to us on the Airbnb chat we would really appreciate it!!

CHECK-OUT
TEAM



Parking

In order to park, you will need to pick up the keys from the concierge. You can park your car where the picture is showing the green arrow to pick up the keys!

Park at "P1 #2A"

We've created a video to help you understand where to park!

Video A

Once you're parked, look for the sign "Tower Elevator Lobby" to find the elevators!

Here's a video to help you find the elevators:

Video B



Park in this area for 10 mins to pick up the key from the concierge!

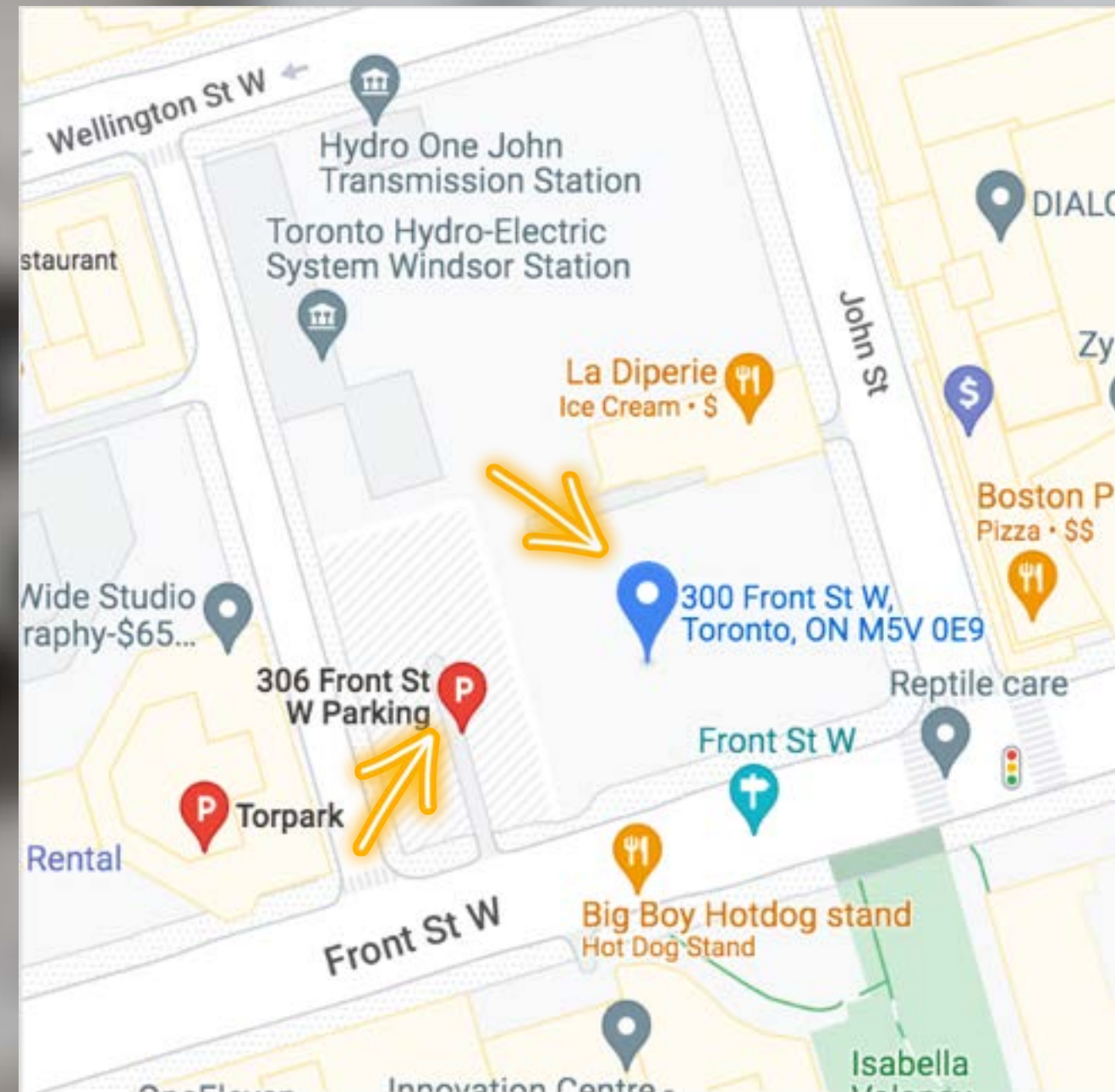


Additional Parking

If you require additional parking, there is a parking lot directly next to the building.

“306 Front Street W Parking”

It's a \$20 Flat Fee to Park with additional charges after 6pm.



Elevators



You will need to take the

“LOW RISE ELEVATORS”

to get to your floor.

Please note, sometimes the building needs to perform inspections and that will cause delays for the elevators

First Aid Kit

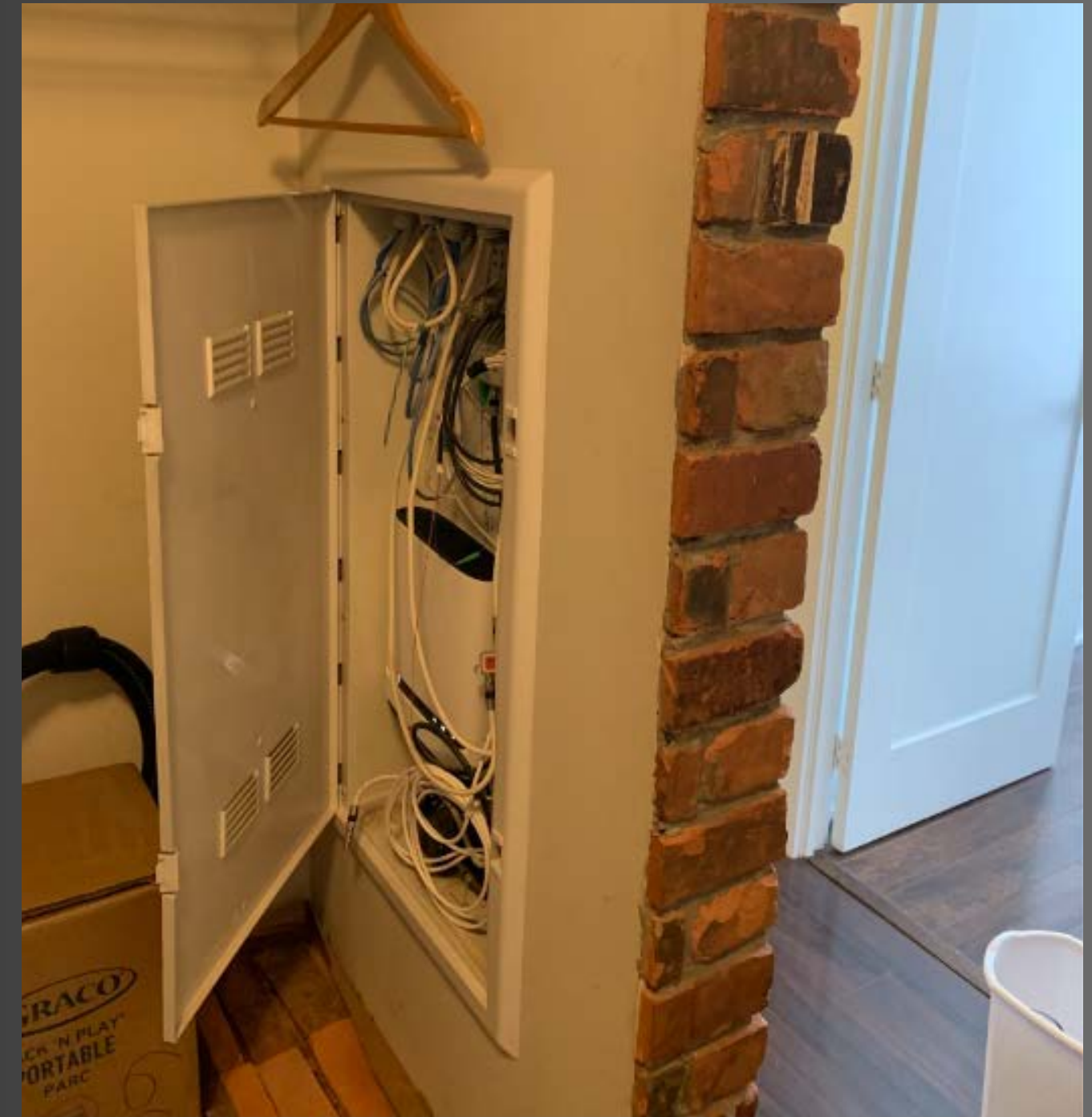


There is a First Aid Kit inside of the kitchen cupboard!

If you use anything in the kit, please let us know so we can replace it for the next guest!

Thank you!

WiFi



WIFI INFO

NAME: Bell-Wifi

Password: wifi123

The modem will be located inside the closet laundry room behind the access panel.

Garbage Chute

The garbage chute is located on your floor directly across the elevators.

Please, dispose of your garbage in a respectful manner!

DO NOT THROW BOXES DOWN THE CHUTE ON YOUR FLOOR! YOU MUST BRING IT OUTSIDE TO THE GROUND FLOOR NEXT TO THE GARAGE ENTRANCE!

If you have any questions, please ask the concierge!

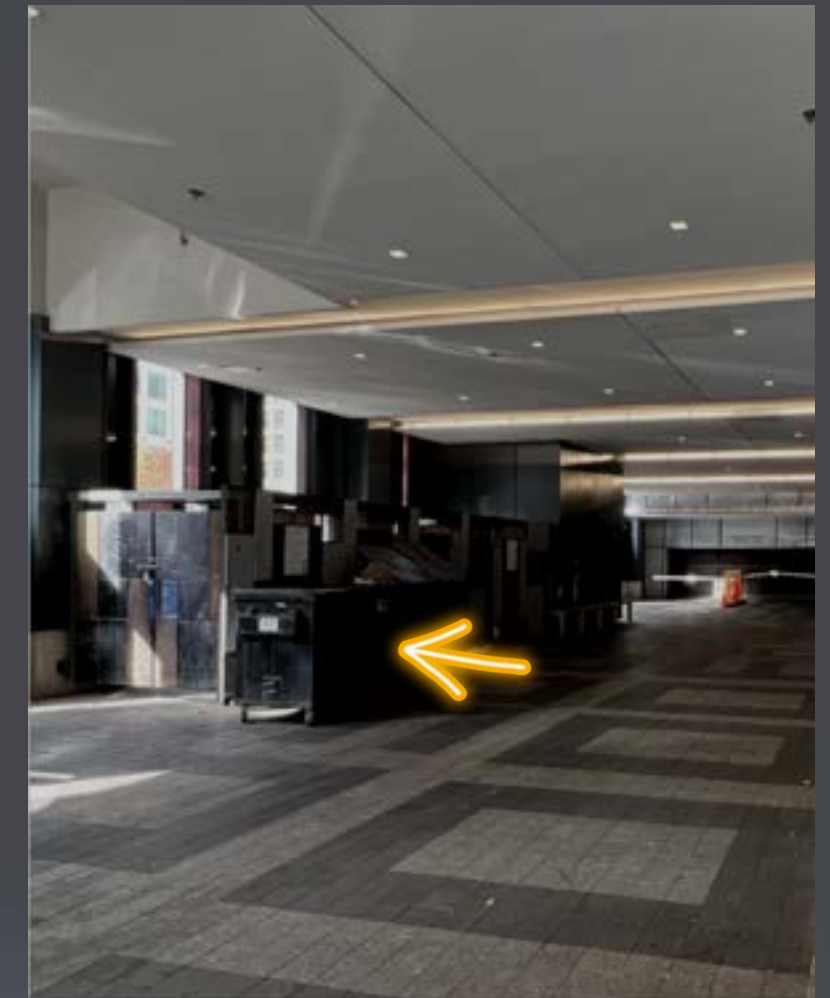
Unit Door



Garbage Room



**FOLLOW THE RULES
POSTED ON THE WALL!**



THROW BOXES HERE

How to use the Thermostat



We've created a video to help you use the thermostat!

[Video A](#)

Let us know if you have any additional questions!
Preferred room temperature is 20–22 °C (68–72 °F).

Iron/Steamer



The unit is equipped with an Iron, Ironing Board and a Steamer for your convenience!

Please, remember to use it safely and responsibly!

It will be located inside of the Bedroom Closets.

Air Mattress



Feel free to use the Air Mattress in the unit!

It is located in the front closet of the unit. The pump is inside of the bag with the mattress.

Please, return it to the same location once finished!

Amenities

The Amenities are located on the “REC” floor. Take the elevator up to the “REC” floor and remember to have your fob with you.

You may use the Gym, Pool and Hot Tub from 8am-12pm.

You will need to tap your Building Fob onto the sensors to gain access.

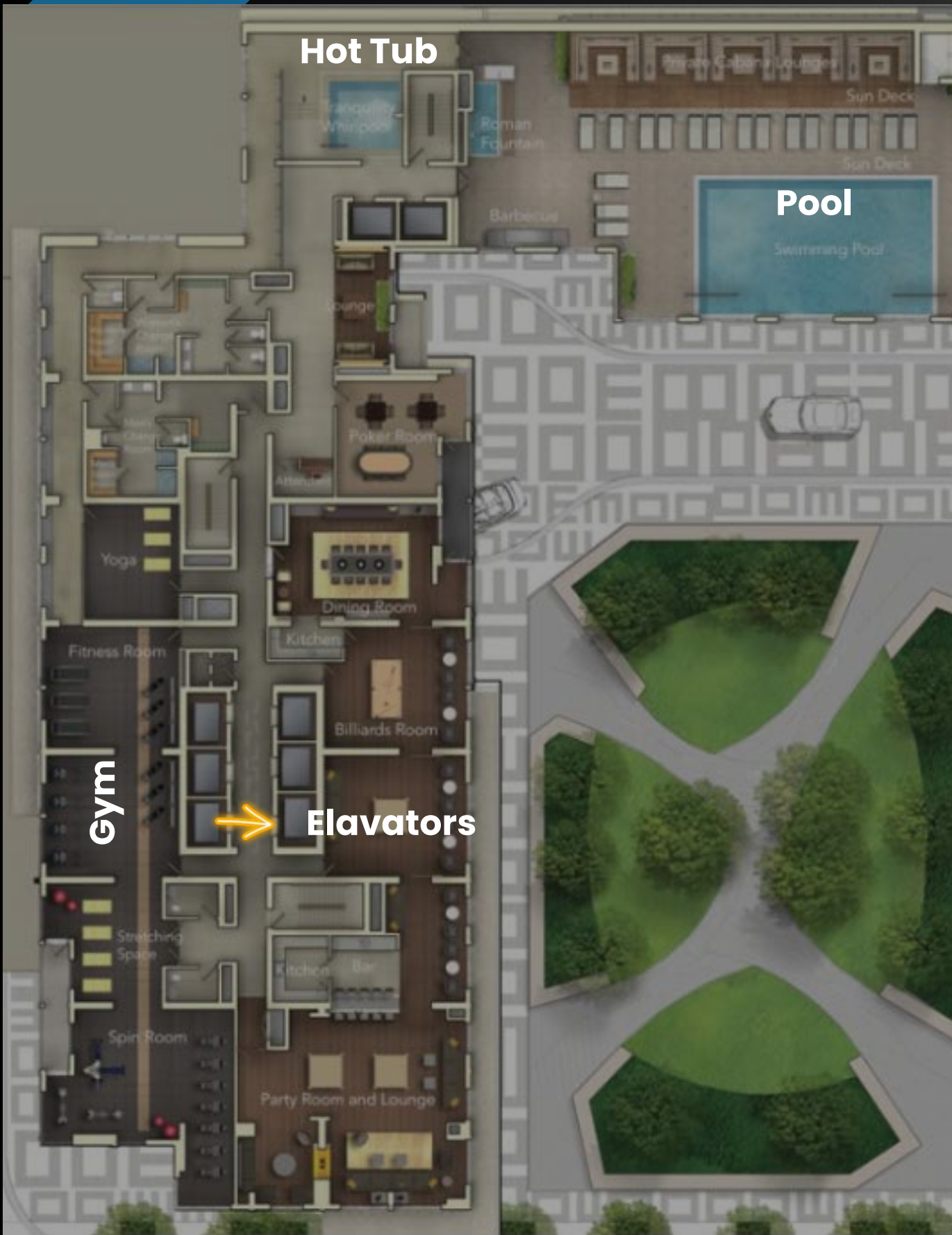
If the Black Sensors are Blinking Red and Green, it means that the facility is Out of Service. Try coming back later to see if they have opened again.

If you still have questions, you can contact the concierge or contact us to double check.

We’ve created some videos to help you find the amenities:

[Video A](#)

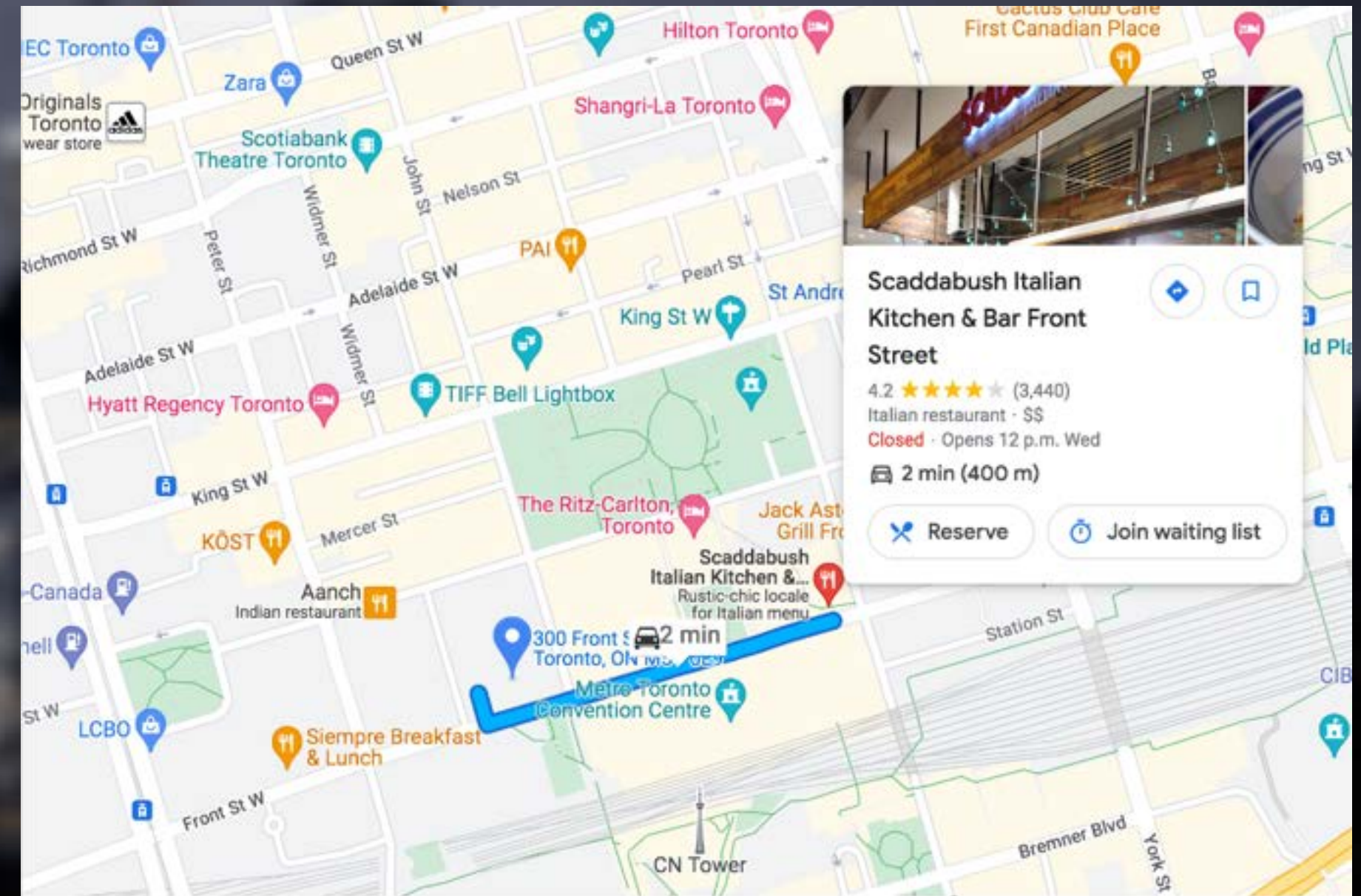
[Video B](#)



Nearby Grocery Stores



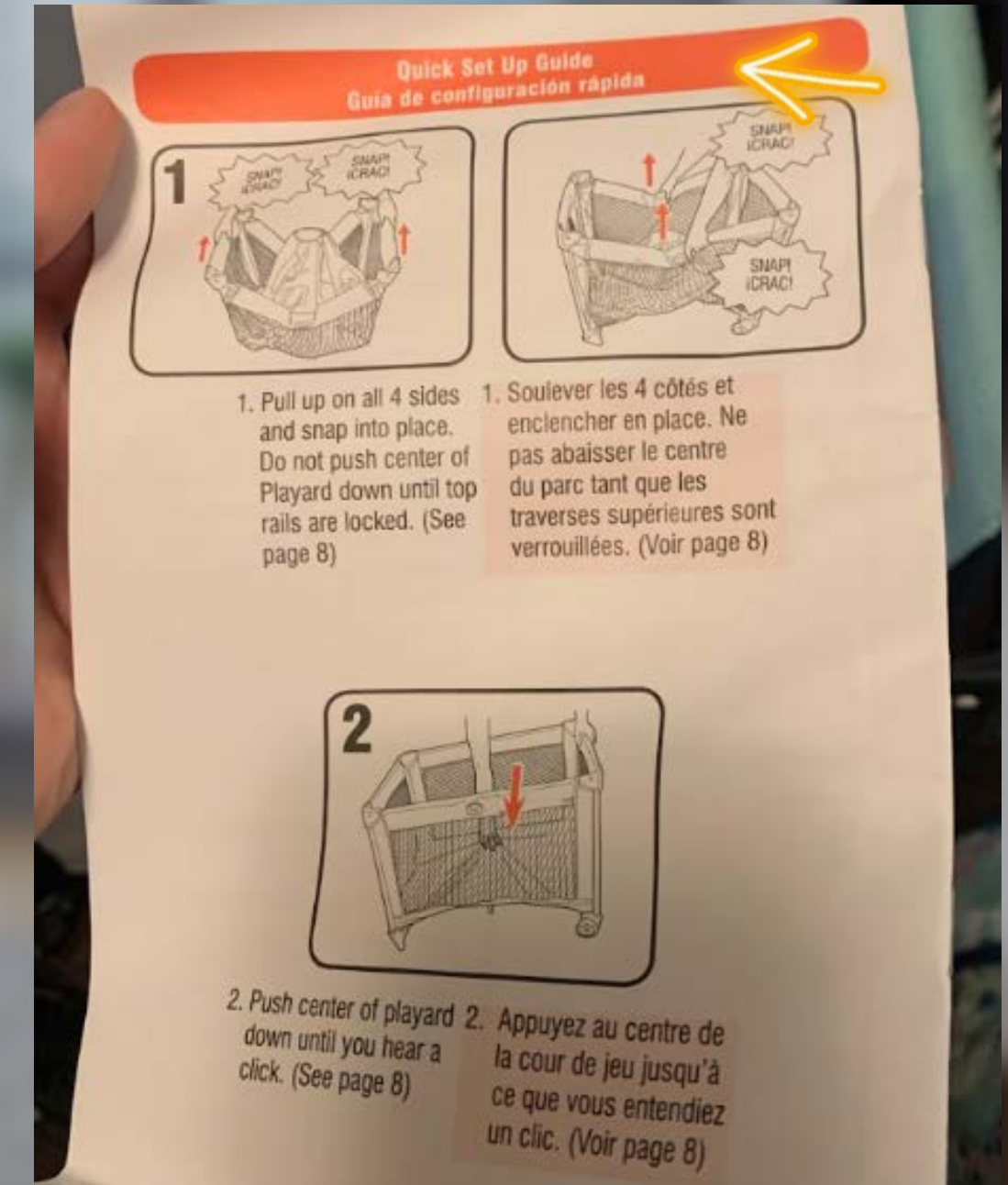
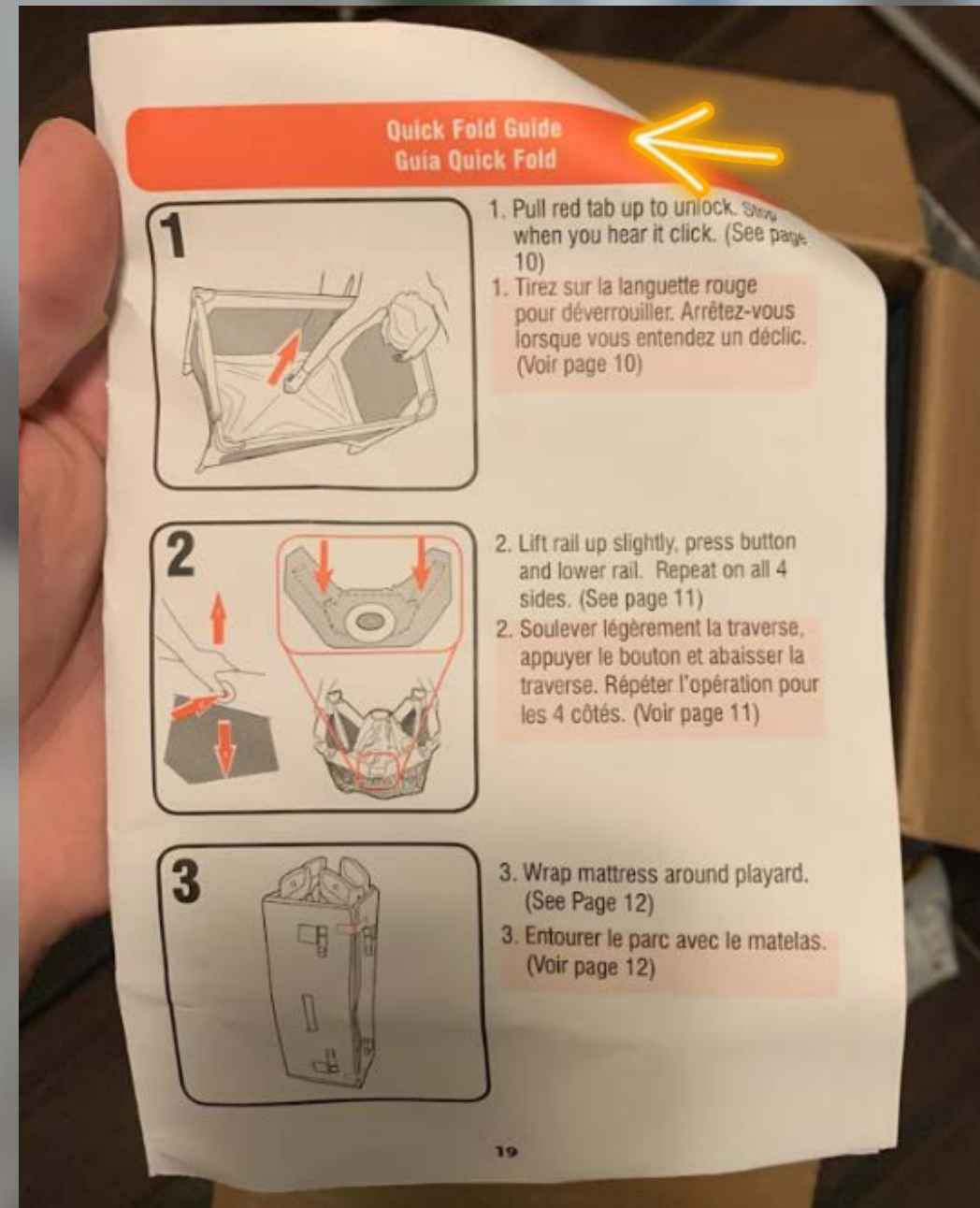
There are a few great grocery stores near you! We recommend:
Rabba's Fine Foods
Sobeys
Longo's



There is also a wonderful restaurant if you're looking to dine out! It's called Scaddabush Italian Kitchen & Bar!

Kids PlayPen

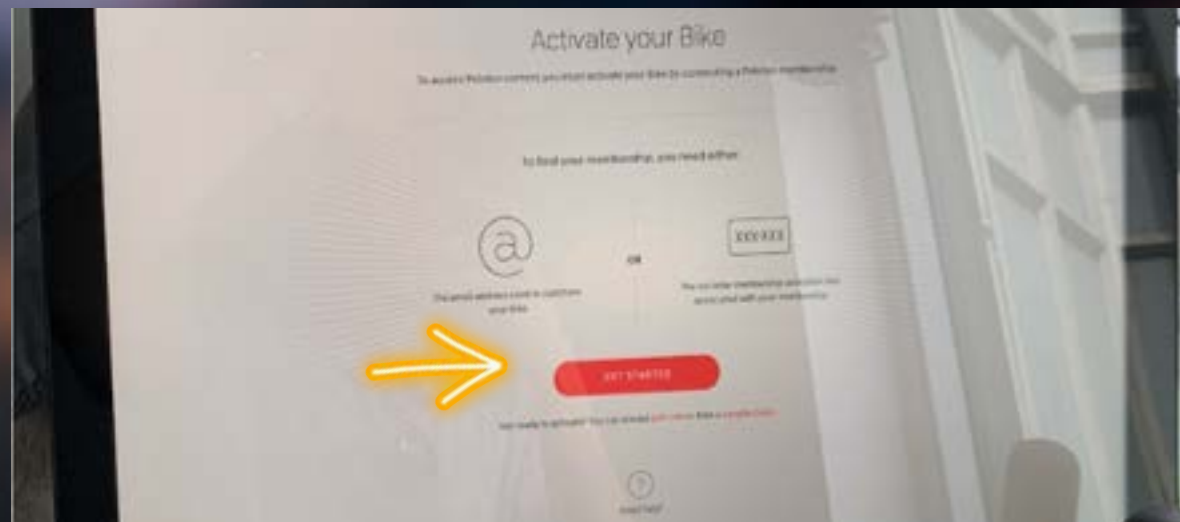
Feel free to use the Playpen in the unit!
It's located in the front closet of the unit!
Please, return it to the same location when finished using it.
Here are the instructions on how to use it:



Peloton Exercise Bike

Feel free to use the Peloton Exercise Bike in the unit!

Please, remember to use it safely and responsibly!



Power cord needs to be plugged into the back of the bike and into the outlet!

Games



There are a few games if you would like to use!
It is located inside of the dining table seats!
Please, try not to lose any pieces and always
return the items back to this location!

Vinyl Records



There are a few Records available if you'd like to listen to!
It is located inside of the dining table seats!
Please, always return the items back to this location!

Local Recommendations

Here is a link to some of my favourite Restaurants in the City and a few other cool spots.

<https://www.google.com/maps/@/data=!3m1!4b1!4m3!11m2!2seV92hw0LRTyJluQb3iErBg!3e3>

Thank You!

We hope you enjoy your stay.

See you again soon!

Don't forget to rate us 5 STARS!

